



# ACHEN-GARDNER CONSTRUCTION

550 S. 79th Street, Chandler, AZ 85226 | 2425 W. Wave Hill Court, Tucson, AZ 85705

NOV  
2020  
NEWS



## A Time to be Thankful

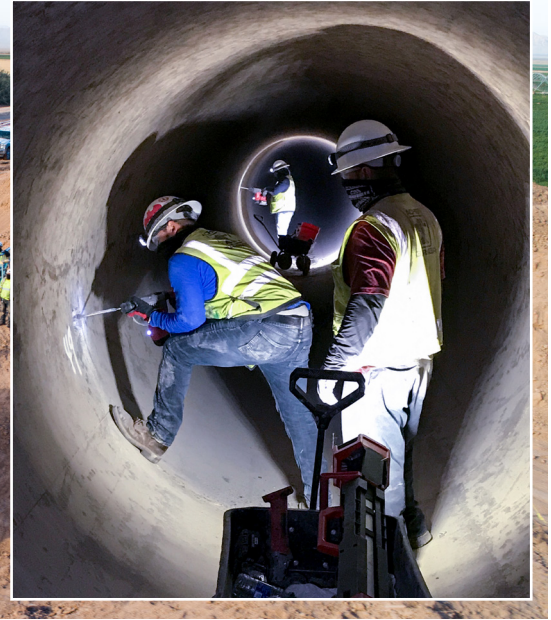
Thank you to all of our friends, clients, and colleagues for your kindness and collaboration during these unprecedented times. From our family to yours, have a safe and happy Thanksgiving.

### Primus Line in Glendale

We are rehabilitating 15,000 LF of 6" waste activated sludge line with Primus Line for the City of Glendale. The pipe runs from the Arrowhead Ranch Water Reclamation Facility to a discharge manhole on 67th Avenue. Work is being completed near ADOT right of way and in front of a church and school. [Visit our website for more project information and photos.](#)







## Ak-Chin Link Pipeline Assessment and Repairs

We are assessing and repairing segments of the 8.4 mile-long Ak-Chin Link Pipeline as part of our **Link Pipeline Repair and Mitigation DB** project for the Ak-Chin Indian Community. We are constructing concrete encasements of the 78" prestressed concrete cylinder pipeline in eight places and have replaced a 24 foot section with 78" welded steel pipe containing a 48" side outlet and manhole for future access. All work is being completed within a 30 day shutdown window. [Visit our website for more information and photos.](#)

## Robotic Inspection

As part of our **Water Transmission Main Inspection and Assessment JOC** for the City of Phoenix we recently managed the inspection of a 4,400-foot-long, 48" diameter section of Scenario 21, a PCCP transmission main. This section runs under the Salt River and could not be dewatered so the team, including design engineering firm Black & Veatch, utilized a robotic electromagnetic inspection tool which can crawl through full pipelines. The team used the 1080p camera and electromagnetic sensors to assess the pipe and discover any wire breaks. [Visit our website for more information and photos.](#)



## Mask Up

Achen-Gardner remains committed to the safety and well-being of our employee-owners, partners, and the public while we work to ensure our projects are completed on schedule, and due to our efforts we have never had a schedule impact on any of our projects. We are adhering to social distancing guidelines, wearing masks, and conducting many of our meetings online. We are following updates from the CDC and OSHA and improving our workplace sanitation and safety measures accordingly.

## GET SOCIAL WITH US!

Connect with us on social media for more company news and project updates.

### FACEBOOK

[facebook.com/achengardner](https://facebook.com/achengardner)

### TWITTER

[@achengardner](https://twitter.com/achengardner)

### INSTAGRAM

[@achengardner](https://instagram.com/achengardner)

### LINKEDIN

[linkedin.com/company/achen-gardner-construction-llc](https://linkedin.com/company/achen-gardner-construction-llc)

### YOUTUBE

[youtube.com/achengardner](https://youtube.com/achengardner)