



ACHEN-GARDNER CONSTRUCTION

550 S. 79th Street, Chandler, AZ 85226 | 2425 W. Wave Hill Court, Tucson, AZ 85705

SEPT.
2022
NEWS

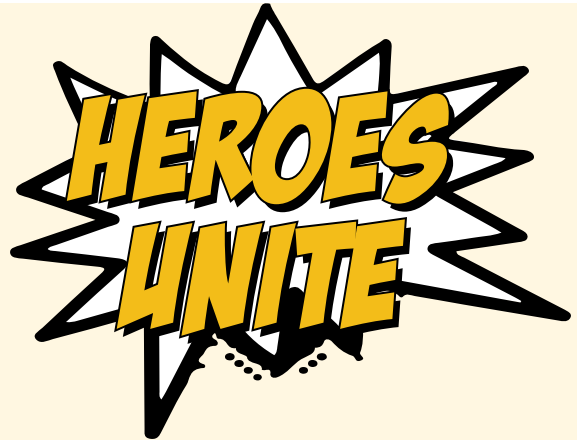


Roundabout Complete

We have completed the Redfield Road and 76th Place roundabout as part of our City of Scottsdale **Raintree Drive Extension CMAR** project. This is part of the first phase of a direct connection from Scottsdale Road to the Loop 101. During the next phase, we will be constructing a new roundabout at Raintree Drive/Hayden Road. [Visit our website for more information and photos.](#)

Classroom Outreach

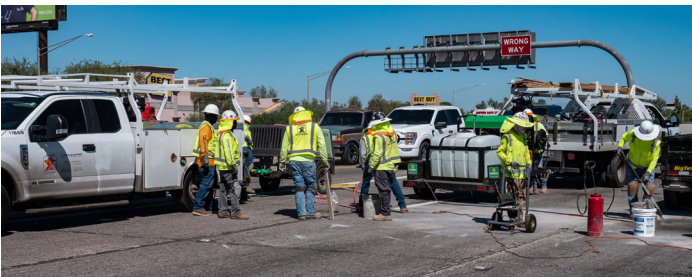
Bryan Mueller, Achen-Gardner Project Executive, spoke to the kids at Fulton Elementary School about what Achen-Gardner does and all of the projects we are working on. The school happens to be right around the corner from our **Chandler Heights Utility Relocations CMAR** project which was also discussed. [Visit our website for information about this project.](#)



Achen-Gardner Construction will be attending the “Everyday Superhero” themed **2022 Arizona Conference on Roads and Streets** at the El Conquistador Tucson on September 28-30. Come see us at our booth (#309) to meet our Achen-Gardner heroes, see our new comic book, collect some fun swag, and win a big prize!

Large Diameter Pipeline Assessment

We recently worked with Pure Technologies and utilized a PipeDiver tool to assess two segments of 48" pre-stressed concrete cylinder pipe (PCCP) as part of our **Ak-Chin Link Pipeline Repair and Mitigation Design-Build** project. The PipeDiver will allow us to assess the condition of the pipeline without dewatering it, mitigating disruption to area farmers whose crops are served irrigation water by this pipeline. [Visit our website for more project information and photos.](#)



I-17 Project Update

Achen-Gardner is working with Emery Sapp & Sons (ESS) on the Arizona Department of Transportation **I-17 Dunlap Avenue to Deer Valley Road Pavement Rehabilitation** project. The project includes:

- Removing the existing asphalt pavement and repairing existing concrete pavement.
- Diamond grinding existing concrete pavement to provide a smooth roadway surface.
- Making bridge deck pavement repairs.
- Replacing pavement markings, including lane line stripes, and other miscellaneous work.

[Visit our website for more information.](#)

Achen-Gardner is a local, employee-owned firm and a member of a nationwide family of contractors, of which ESS is the flagship.

Project Engineers

Achen-Gardner is proud to announce the additions of **Victoria Morin** and **David Cline** as **Project Engineers**. Welcome to the team, Victoria and David!



Roundabout Taking Form

We continue to pave the way for roadway improvements as part of our **Litchfield Square Infrastructure Improvements CMAR** project for the City of Litchfield Park. We are currently developing the first of four roundabouts for this project. [Visit our website for more project information and photos.](#)